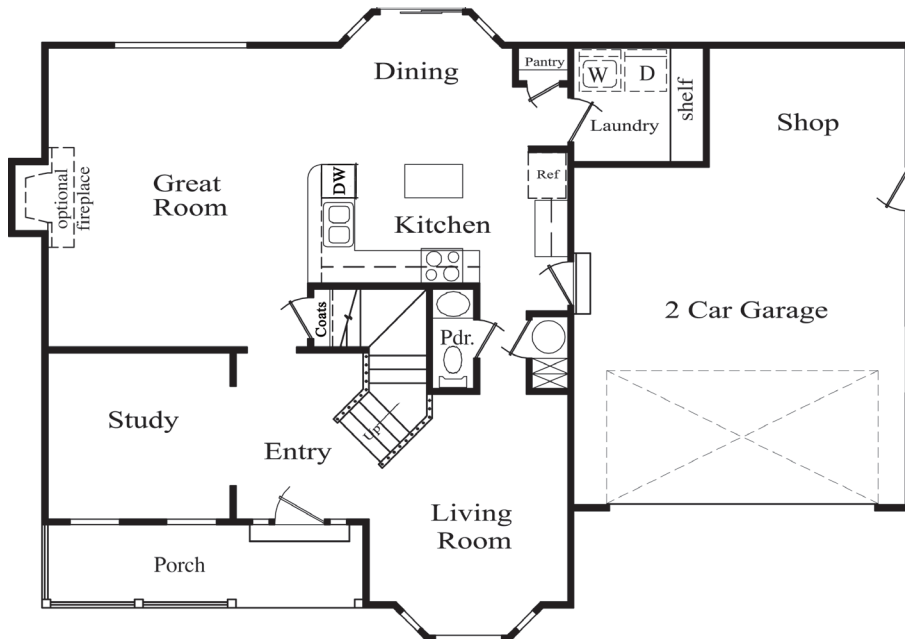


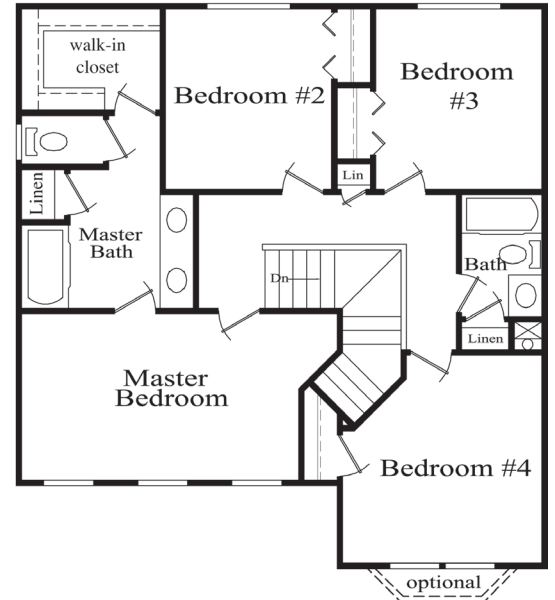
CORINNA

THE ESTATES AT
LYDESDALE BEND
 • 2300 W. 560 S. Provo •

- 1,945 sq. ft.
- 4 bedrooms
- 2 1/2 baths
- 2-car garage



Main Floor
 1024 sq. ft.



2nd Floor
 921 sq. ft.

BRETT FROST OR
 801-369-0428

STEVE MADDUX
 801-602-9839

CORINNA FEATURES

Luxury & Convenience

- 4 bedrooms
- 2 1/2 baths
- Kitchen open to family room
- Formal living room
- Master bath with soaking tub/shower
- Large master bedroom walk-in closet
- Main floor laundry room
- Shop area in garage
- Hardwood railing on stairs
- Main floor powder room (1/2 bath)
- 2 car garage with garage door opener
- Covered front porch
- Pre-wired for telephone, cable TV, and Cat V computer networking

Kitchen

- Alder or birch raised panel cabinets
- Laminate countertops
- Dishwasher
- Smooth top range
- Microwave/hood
- Disposal
- Pantry

Bathrooms

- Alder or birch raised panel vanity cabinets
- Laminate counters with self-rimming sinks
- Full width mirrors above vanities
- Moen plumbing fixtures

Quality

- Individually styled exterior
- Low-maintenance exterior: brick or stone & vinyl siding or stucco
- Rain gutters & downspouts
- Metal or fiberglass exterior doors
- Concrete patio
- 30 year asphalt shingles
- Kickplate on front door
- Thumb latch & deadbolt on front door
- Nickel interior door handle sets
- Rounded drywall corners
- Vinyl frame double pane windows
- Insulated exterior doors
- R-38 attic insulation
- R-19 wall insulation
- 80% efficient gas furnace

Optional Features

- Fireplace in great room
- Additional brick, stucco, stone or SmartSide on exterior
- Central Air Conditioning
- Separate stall shower in master bathroom
- 2nd floor bay window in bedroom #4

Generous flooring, lighting, appliance and cabinet allowances are included in the price of the home.

Georgetown homes feature fine quality in every respect. Standard plans can be modified to accommodate your individual needs. We build each home to be customized for the buyer and welcome your input when designing your home.

GEORGETOWN
• *Development* •

www.georgetowndevelopment.com



Prudential
Utah Elite Real Estate
www.myhomeutah.com