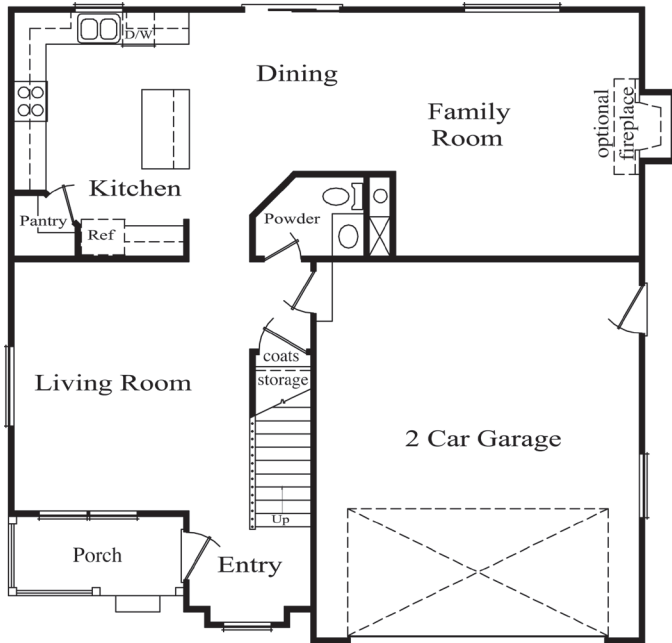


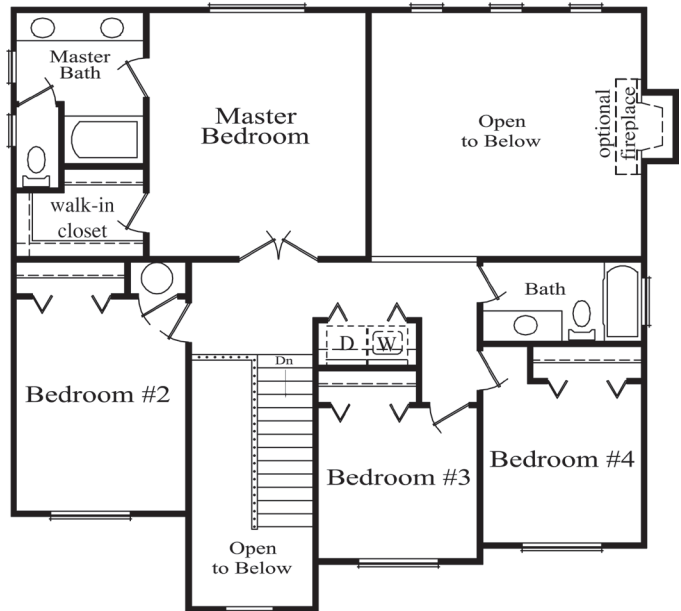
RIVERWALK

THE ESTATES AT
CLYDESDALE BEND
 • 2300 W. 560 S. Provo •

- 1,997 sq. ft.
- 4 bedrooms
- 2 1/2 baths
- 2-car garage



Main Floor
 1014 sq. ft.



2nd Floor
 983 sq. ft.



Additional elevations (floor plans may vary slightly)

BRETT FROST OR STEVE MADDUX
 801-369-0428 801-602-9839

RIVERWALK FEATURES

Luxury & Convenience

- 4 bedrooms
- 2 1/2 baths
- Kitchen open to dining & family rooms
- Master bath with soaking tub/shower
- Large walk-in closet in master bedroom
- 2nd floor laundry area
- Hardwood railing on stairs
- Main floor powder room (1/2 bath)
- 2 car garage with garage door opener
- Covered front porch
- Pre-wired for telephone, cable TV, and Cat V computer networking

Kitchen

- Alder or birch raised panel cabinets
- Laminate countertops
- Dishwasher
- Smooth top range
- Microwave/hood
- Disposal
- Pantry

Bathrooms

- Alder or birch raised panel vanity cabinets
- Laminate counters with self-rimming sinks
- Full width mirrors above vanities
- Moen plumbing fixtures

Quality

- Individually styled exterior
- Low-maintenance exterior: brick or stone & vinyl siding or stucco
- Raingutters & downspouts
- Metal or fiberglass exterior doors
- Concrete patio
- 30 year asphalt shingles
- Kickplate on front door
- Thumbblatch & deadbolt on front door
- Nickel interior door handle sets
- Rounded drywall corners
- Vinyl frame double pane windows
- Insulated exterior doors
- R-38 attic insulation
- R-19 wall insulation
- 80% efficient gas furnace

Optional Features

- Fireplace in living room and/or family room
- Additional brick, stucco, stone or Smartside on exterior
- Central Air Conditioning
- Separate stall shower in master bathroom
- Finished bonus room

Generous flooring, lighting, appliance and cabinet allowances are included in the price of the home.

Georgetown homes feature fine quality in every respect. Standard plans can be modified to accommodate your individual needs. We build each home to be customized for the buyer and welcome your input when designing your home.

GEORGETOWN

• *Development* •

www.georgetowndevelopment.com



Prudential

Utah Elite Real Estate
www.myhomeutah.com