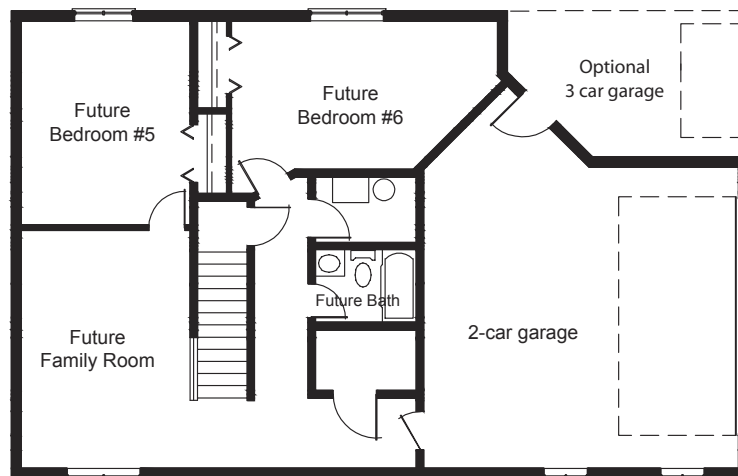
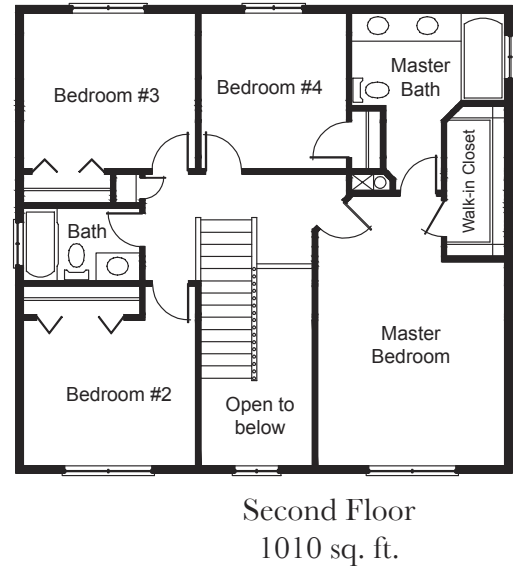
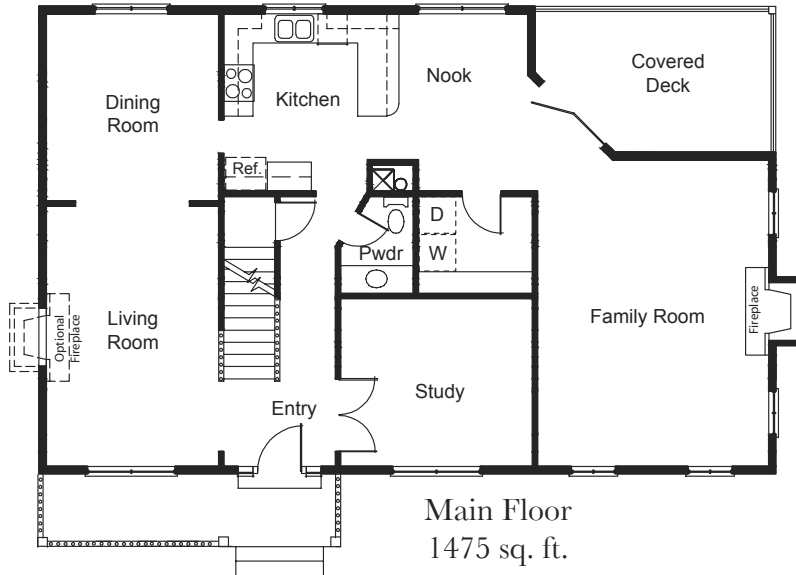




Dartmouth II

- 2485 finished sq. ft.
- 4 bedrooms, 2 ½ baths
- Unfinished basement (904 sq. ft.)
- 2-car garage



DARTMOUTH II FEATURES

Luxury & Convenience

- 4 bedrooms, 2 ½ baths
- Breakfast nook
- Formal dining room
- Main floor study
- Large walk-in closet in master bedroom
- 2 car garage with garage door opener
- Hardwood railing on stairs
- Covered front porch & deck
- Pre-wired for telephone, cable TV, and Cat V computer networking
- Main floor laundry
- Drive under garage (sloped lot only)
- Fireplace in family room

Bathrooms

- Alder or birch vanity raised panel cabinets
- Laminate counters with self-rimming sinks
- Full width mirrors above vanities
- Moen plumbing fixtures

Kitchen

- Alder or birch raised panel cabinets
- Laminate countertops
- Dishwasher
- Microwave hood
- Smooth top range
- Disposal

Quality

- Individually styled exterior
- Low-maintenance exterior: brick or stone & vinyl siding
- Rain gutters & downspouts
- Metal or fiberglass exterior doors
- Concrete patio
- 30 year asphalt shingles
- Kickplate on front door
- Thumb latch & deadbolt on front door
- Nickel interior door handle sets
- Rounded drywall corners
- Vinyl frame double pane windows
- Insulated exterior doors
- R-49 attic insulation
- R-19 wall insulation
- 80% efficient gas furnace

Optional Features

- Fireplace in living room
- Additional brick, stucco or stone on exterior (standard Dartmouth II plan includes brick or stone & vinyl siding)
- Central Air Conditioning
- Finished basement
- Side entry garage on main floor
- 3 car garage

Generous flooring, lighting, appliance and cabinet allowances are included in the price of the home.

Georgetown homes feature fine quality in every respect. Standard plans can be modified to accommodate your individual needs. We build each home to be customized for the buyer and welcome your input when designing your home.

Call Frankie or Mary at Etzel Realty for information
435-637-6777