

# PARKLANE TOWNHOMES

Quality Townhomes and Twinhomes in a prime Price location



*for information, contact:*

**Frankie Sacco**  
435-637-6777

**GEORGETOWN**  
*Development*  
www.georgetowndevelopment.com

**ETZEL REALTY**  
www.etzelonline.com

# PARKLANE TOWNHOMES



*475 N. 1700 E. • Price, Utah*

**GEORGETOWN**  
*Development*  
801.374.0772  
www.georgetowndevelopment.com

# PARKLANE TOWNHOMES

## Features and Amenities

### Detail

- Kickplate on front door
- Alder or Birch raised-panel cabinets and vanities
- Hardwood & iron stair railings
- Crown molding in living and dining area
- Raised-panel doors and molded trim
- Rounded corners
- Full-width vanity mirrors
- Nickel handlesets & hinges

### Quality

- Individually styled exteriors
- Brick, stone, & vinyl siding
- Crawl space construction
- Low E vinyl frame double-pane windows
- R-49 attic insulation
- R-19 wall insulation
- 80% efficient gas furnace
- 2 x 6 exterior walls
- Moen plumbing fixtures

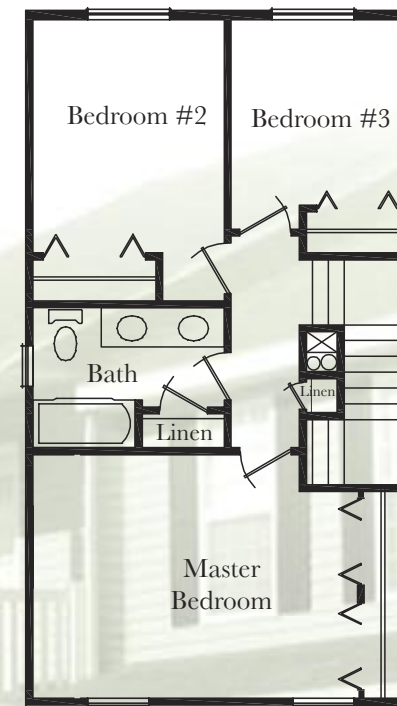
### Convenience

- Maintenance-free exterior
- Garage or covered carport
- Fenced backyard with patio
- Main floor powder room (½ bath)
- Pre-wired for telephone, cable TV, and Cat V computer networking
- Main floor laundry
- Range, microwave, dishwasher, & garbage disposal

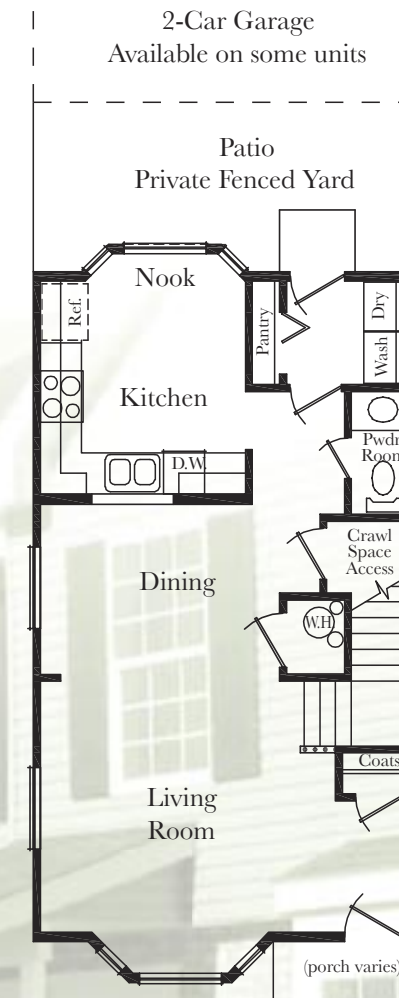
### Community

- Extensive landscaping & parks
- Playground
- Pavilion
- BBQ area
- Site lighting
- Guest parking

*A variety of upgrades, changes, and material color selections are available where construction progress permits. You are invited to inquire.*



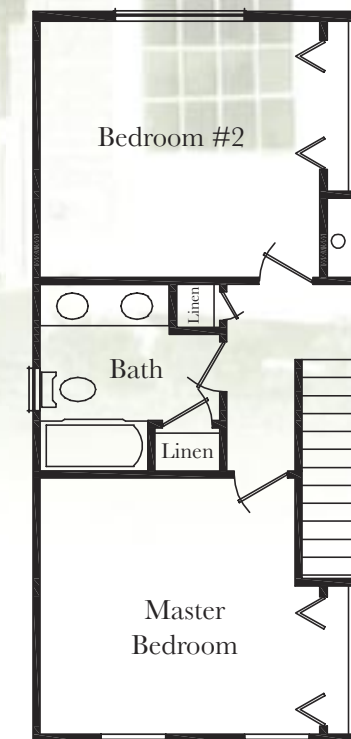
UPPER LEVEL



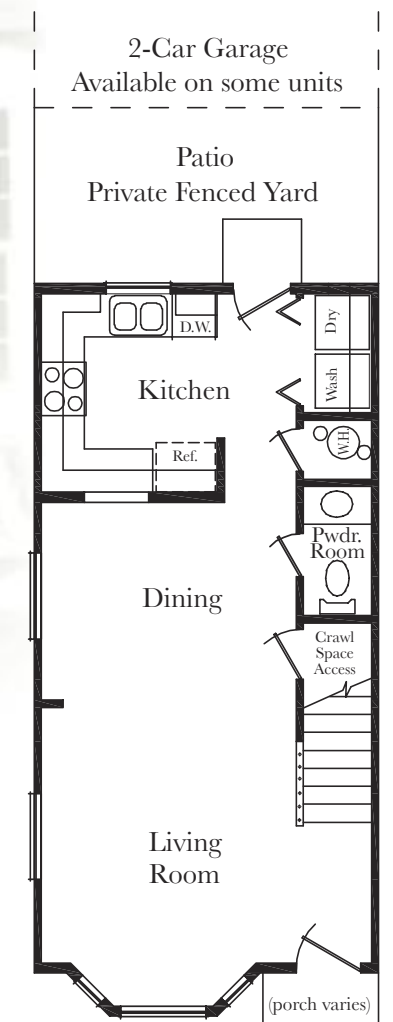
MAIN LEVEL

### THE BARCLAY

- 3 bedrooms
- 1 ½ baths
- 1260 sq. feet



UPPER LEVEL



MAIN LEVEL

### THE ADDISON

- 2 large bedrooms
- 1 ½ baths
- 1056 sq. feet