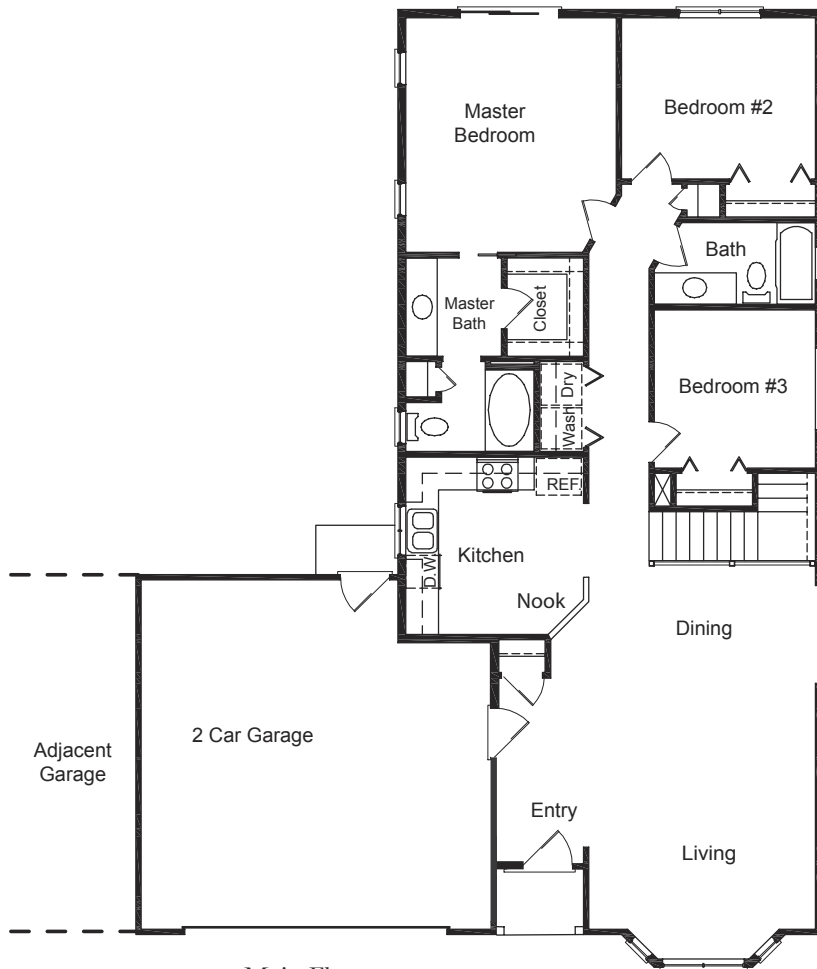
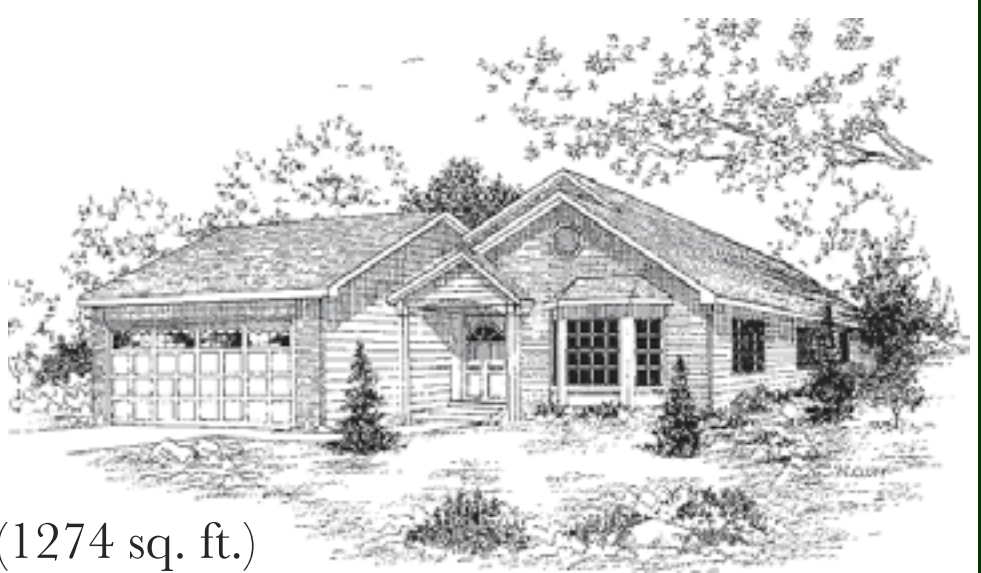


PARKLANE

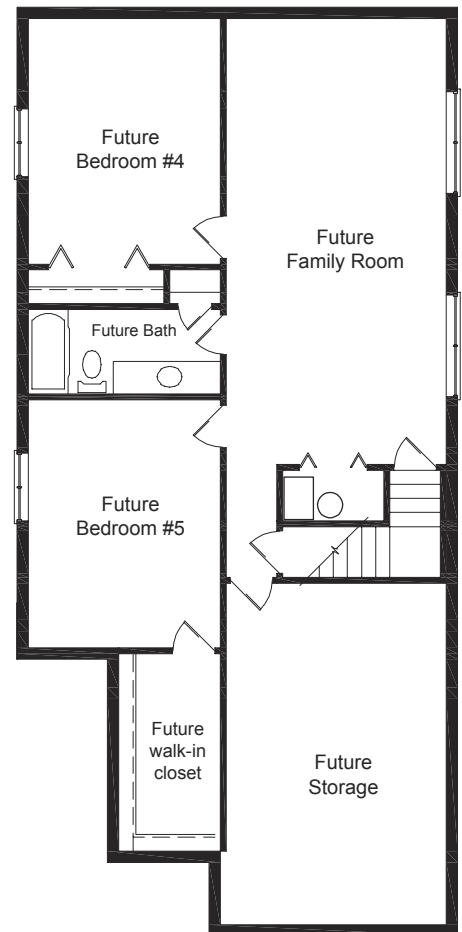
TWIN HOMES

Berkshire

- 1320 finished sq. ft.
- 3 bedrooms, 2 baths
- Unfinished basement (1274 sq. ft.)
- 2-car garage
- Main floor master bedroom with walk-in closet



Main Floor
1320 sq. ft.



Unfinished Basement
1274 sq. ft.

GEORGETOWN
Development

www.georgetowndevelopment.com

ETZEL REALTY

www.etzelonline.com

BERKSHIRE FEATURES

Luxury & Convenience

- 3 bedrooms, 2 baths
- Breakfast nook
- Large bay window in living room
- 2 car garage with garage door opener
- Covered front porch
- Pre-wired for telephone, cable TV, and Cat V computer networking

Bathrooms

- Alder or birch vanity raised panel cabinets
- Laminate countertops with self-rimming sinks
- Full width mirrors above vanities
- Moen plumbing fixtures

Kitchen

- Alder or birch raised panel cabinets
- Laminate countertops
- Dishwasher
- Smooth top range
- Microwave hood
- Disposal

Main Floor Master Suite

- Large garden tub
- Walk-in closet

Quality

- Individually styled exterior
- Low-maintenance exterior: brick or stone & vinyl siding
- Rain gutters & downspouts
- Metal or fiberglass exterior doors
- Concrete patio
- 30 year asphalt shingles
- Kickplate on front door
- Thumb latch & deadbolt on front door
- Nickel interior door handle sets
- Rounded drywall corners
- Vinyl frame double pane windows
- Insulated exterior doors
- R-49 attic insulation
- R-19 wall insulation
- 80% efficient gas furnace

Optional Features

- Additional brick, stucco or stone on exterior (standard Berkshire plan includes brick or stone & vinyl siding)
- Central Air Conditioning
- Finished basement

Generous flooring, lighting, appliance and cabinet allowances are included in the price of the home.

Georgetown homes feature fine quality in every respect. Standard plans can be modified to accommodate your individual needs. We build each home to be customized for the buyer and welcome your input when designing your home.

Call Frankie or Mary at Etzel Realty for information
435-637-6777