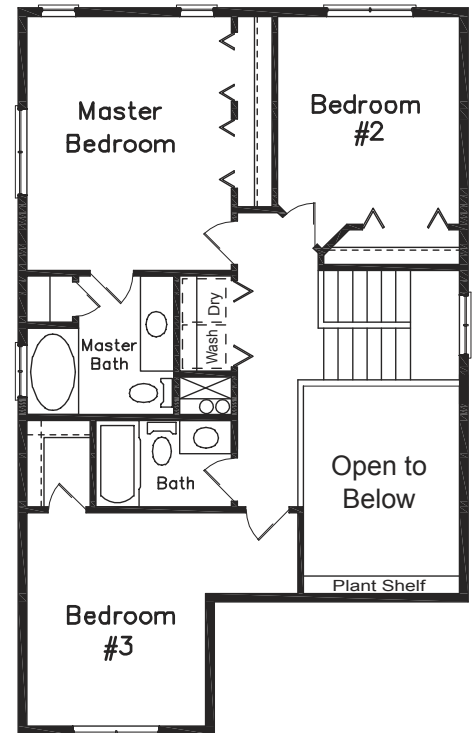
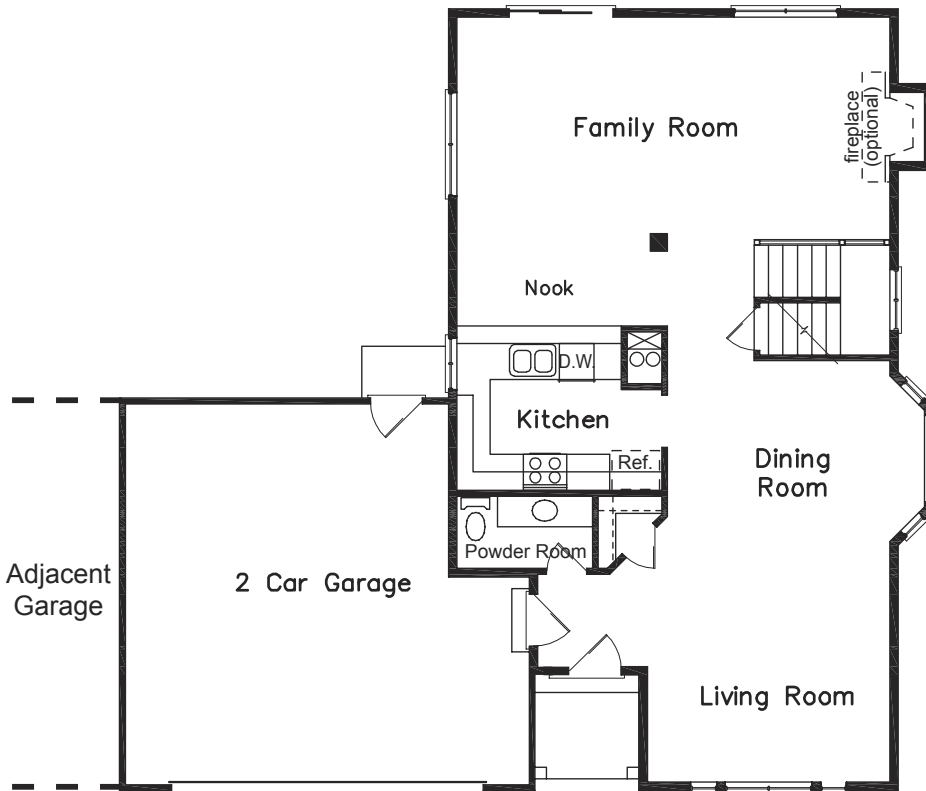


PARKLANE

TWIN HOMES

Crestview

- 1961 finished sq. ft.
- 3 bedrooms, 2 ½ baths
- Unfinished basement (1027 sq. ft.)
- 2-car garage



Second Floor
860 sq. ft.

Unfinished Basement
(not shown)
1027 sq. ft.

GEORGETOWN
Development
www.georgetowndevelopment.com

ETZEL REALTY
www.etzelonline.com

CRESTVIEW FEATURES

Luxury & Convenience

- 3 bedrooms, 2 ½ baths
- Vaulted living & dining rooms
- Formal dining room with bay window
- Kitchen open to family room
- Master bath with soaking tub
- Large master bedroom closet
- 2nd floor laundry
- Hardwood railing on stairs
- Overlook above dining room
- Main floor powder room (½ bath)
- 2 car garage with garage door opener
- Covered front porch
- Pre-wired for telephone, cable TV, and Cat V computer networking

Kitchen

- Alder or birch raised panel cabinets
- Laminate countertops
- Dishwasher
- Smooth top range
- Microwave hood
- Disposal

Bathrooms

- Alder or birch vanity raised panel cabinets
- Laminate counters with self-rimming sinks
- Full width mirrors above vanities
- Moen plumbing fixtures

Quality

- Individually styled exterior
- Low-maintenance exterior: brick or stone & vinyl siding
- Raingutters & downspouts
- Metal or fiberglass exterior doors
- Concrete patio
- 30 year asphalt shingles
- Kickplate on front door
- Thumbblatch & deadbolt on front door
- Nickel interior door handle sets
- Rounded drywall corners
- Vinyl frame double pane windows
- Insulated exterior doors
- R-49 attic insulation
- R-19 wall insulation
- 80% efficient gas furnace

Optional Features

- Fireplace in family room
- Additional brick, stucco or stone on exterior (standard Crestview plan includes brick or stone & vinyl siding)
- Central Air Conditioning
- Finished basement
- Main floor master bedroom

Generous flooring, lighting, appliance and cabinet allowances are included in the price of the home.

Georgetown homes feature fine quality in every respect. Standard plans can be modified to accommodate your individual needs. We build each home to be customized for the buyer and welcome your input when designing *your* home.

Call Frankie or Mary at Etzel Realty for information
435-637-6777