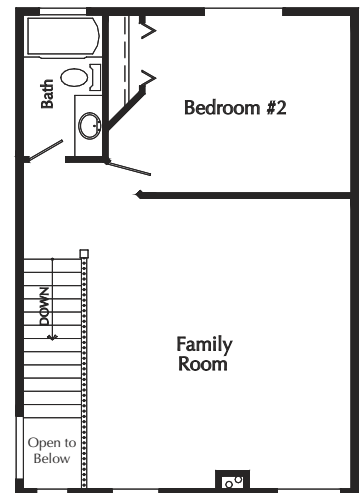
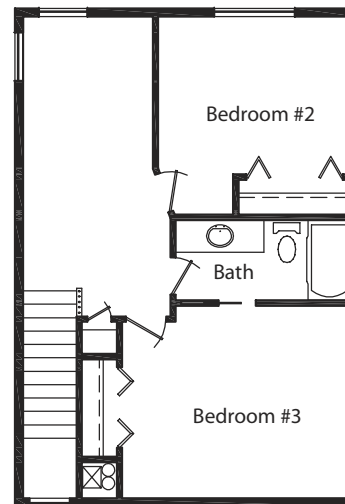
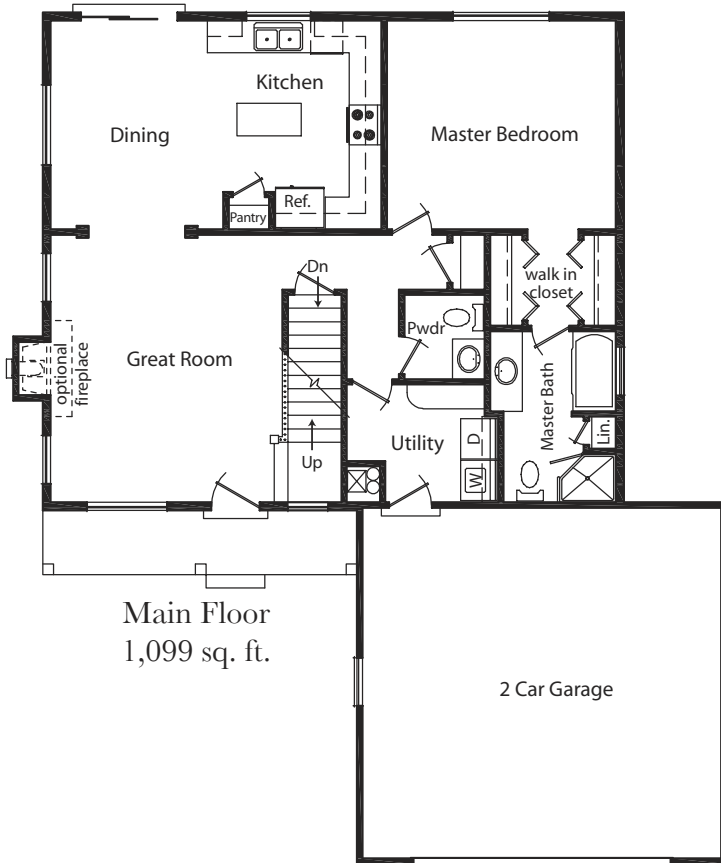


# PARKLANE

## TWIN HOMES

### Teton II

- 1767 finished sq. ft.
- 3 bedrooms, 2 ½ baths
- Unfinished basement (1120 sq. ft.)
- 2-car garage



Unfinished Basement  
(not shown)  
1120 sq. ft.

**GEORGETOWN**  
Development  
www.georgetowndevelopment.com

**ETZEL REALTY**  
www.etzelonline.com

# TETON II FEATURES

## Luxury & Convenience

- 3 bedrooms, 2 ½ baths
- Kitchen open to dining room
- Main floor laundry
- Hardwood railing on stairs
- Main floor powder room (½ bath)
- 2 car garage with garage door opener
- Covered front porch
- Pre-wired for telephone, cable TV, and Cat V computer networking

## Main Floor Master Suite

- Large bathroom with soaking tub & separate shower
- Large walk-in closet

## Kitchen

- Alder or birch raised panel cabinets
- Laminate countertops
- Dishwasher
- Smooth top range
- Microwave hood
- Disposal

## Bathrooms

- Alder or birch raised panel vanity cabinets
- Laminate countertops with self-rimming sinks
- Full width mirrors above vanities
- Moen plumbing fixtures

## Quality

- Individually styled exterior
- Low-maintenance exterior: brick or stone & vinyl siding
- Rain gutters & downspouts
- Metal or fiberglass exterior doors
- Concrete patio
- 30 year asphalt shingles
- Kickplate on front door
- Thumb latch & deadbolt on front door
- Nickel interior door handle sets
- Rounded drywall corners
- Vinyl frame double pane windows
- Insulated exterior doors
- R-49 attic insulation
- R-19 wall insulation
- 80% efficient gas furnace

## Optional Features

- Fireplace in great room
- Additional brick, stucco or stone on exterior (standard Teton II plan includes brick or stone & vinyl siding)
- Central Air Conditioning
- Finished basement

*Generous flooring, lighting, appliance and cabinet allowances are included in the price of the home.*

*Georgetown homes feature fine quality in every respect. Standard plans can be modified to accommodate your individual needs. We build each home to be customized for the buyer and welcome your input when designing your home.*

Call Frankie or Mary at Etzel Realty for information  
**435-637-6777**